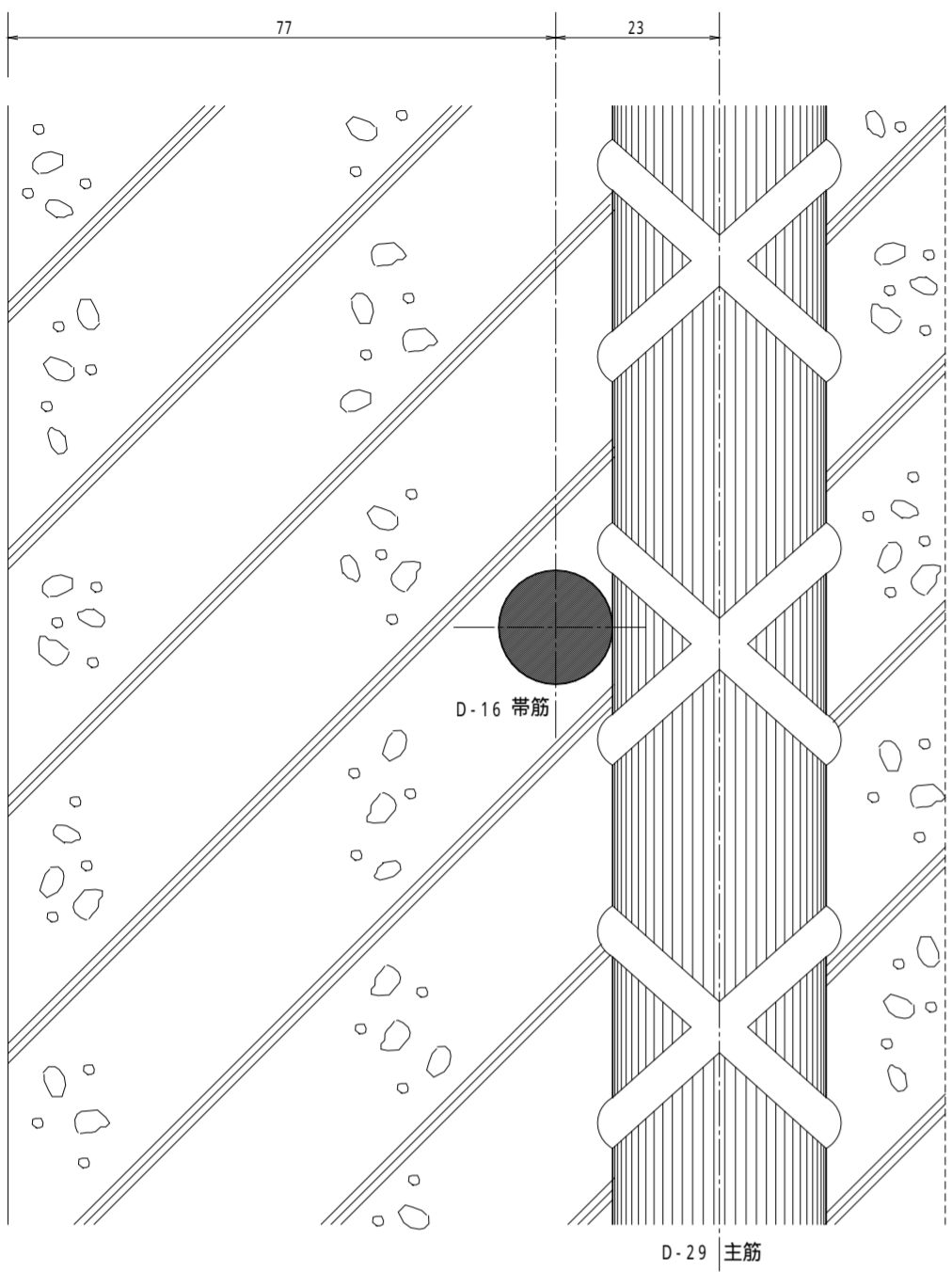


1 炭素繊維網取付要領図

1/ 1

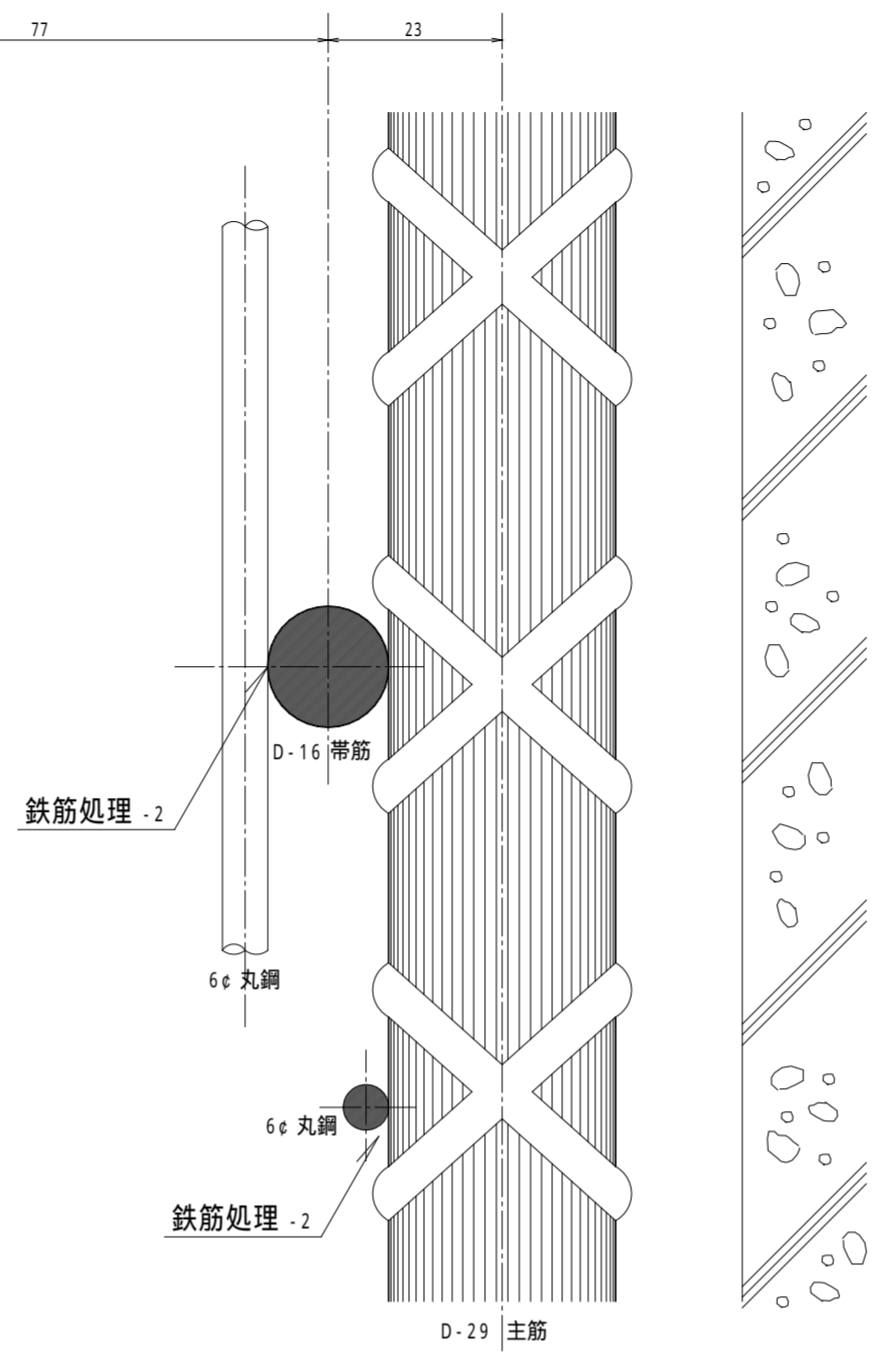
①

下地調査
砕り工事



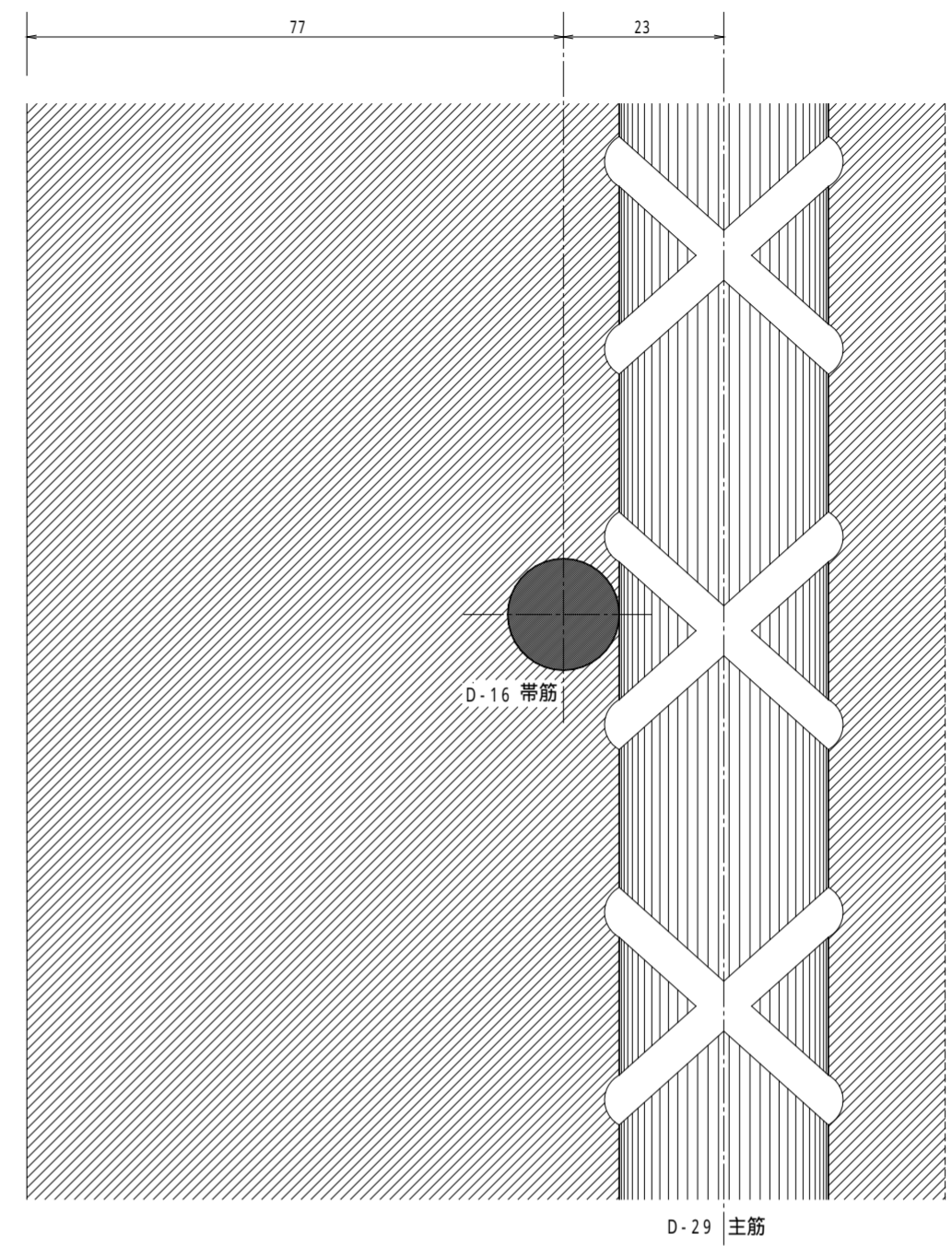
②

鉄筋処理 - 1
鉄筋処理 - 2



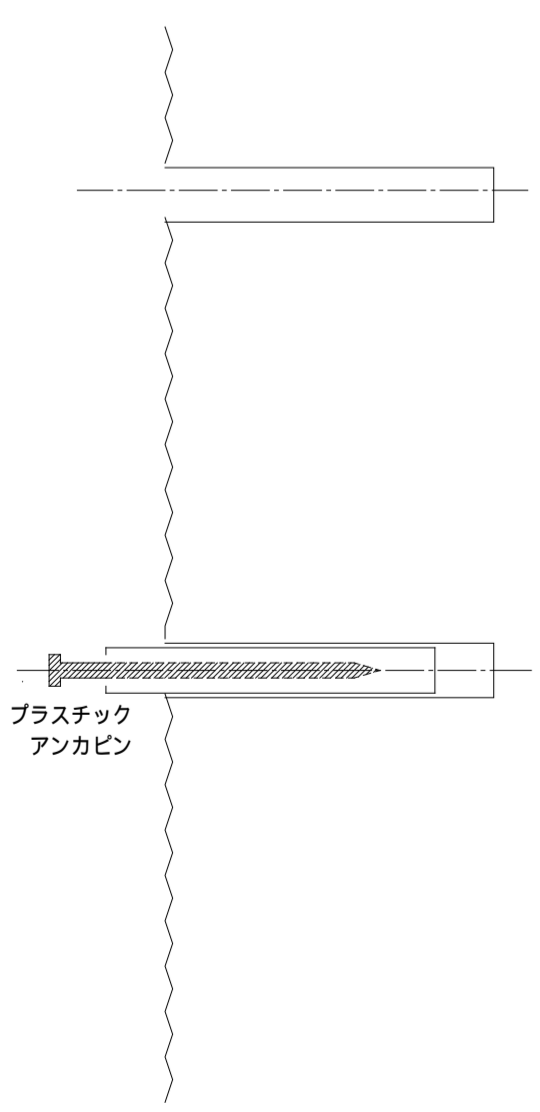
③

断面修復



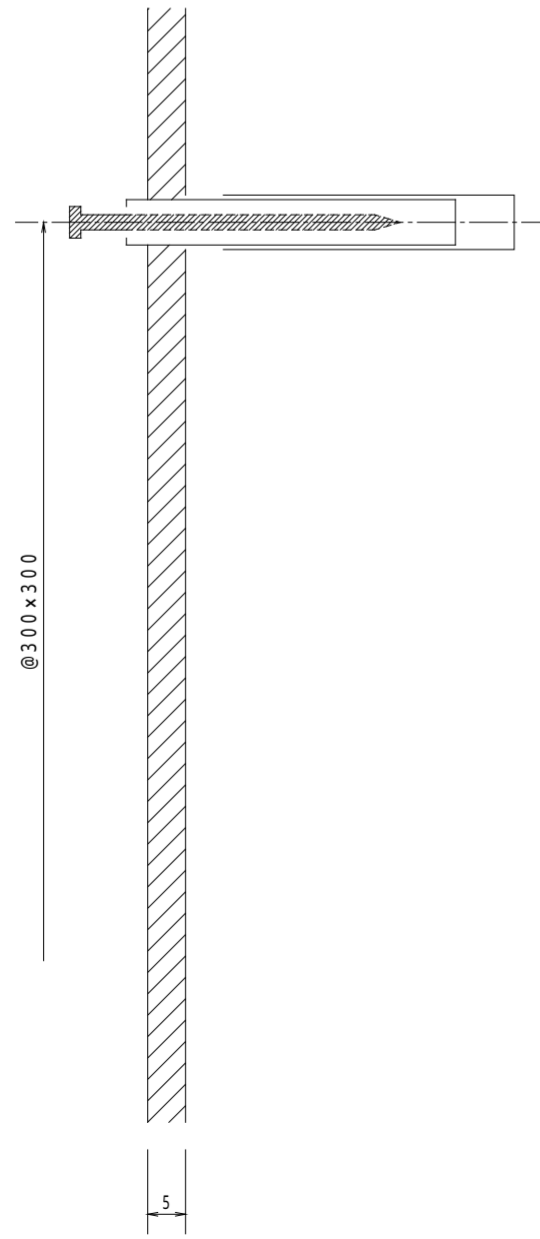
④

アンカピン取付け
(コンクリート表面処理)



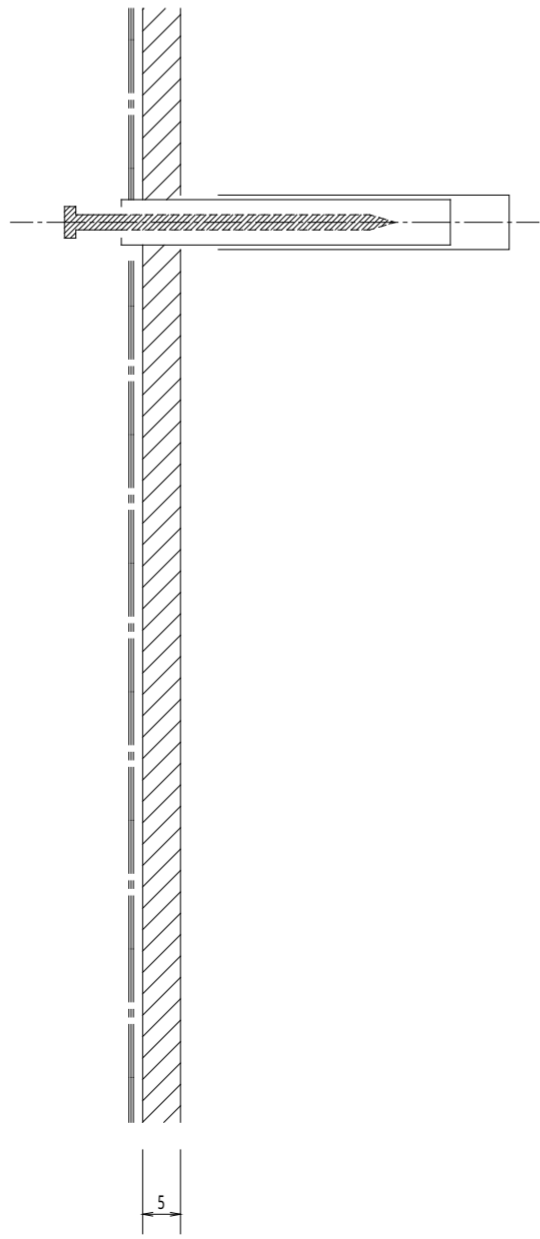
⑤

モルタル吹付け



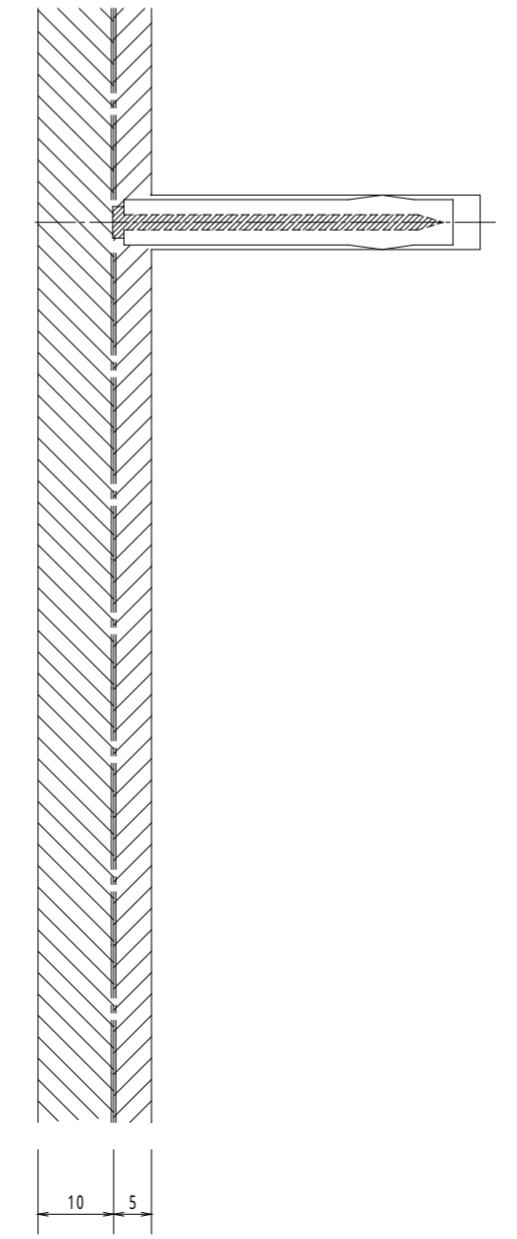
⑥

陽極取付け



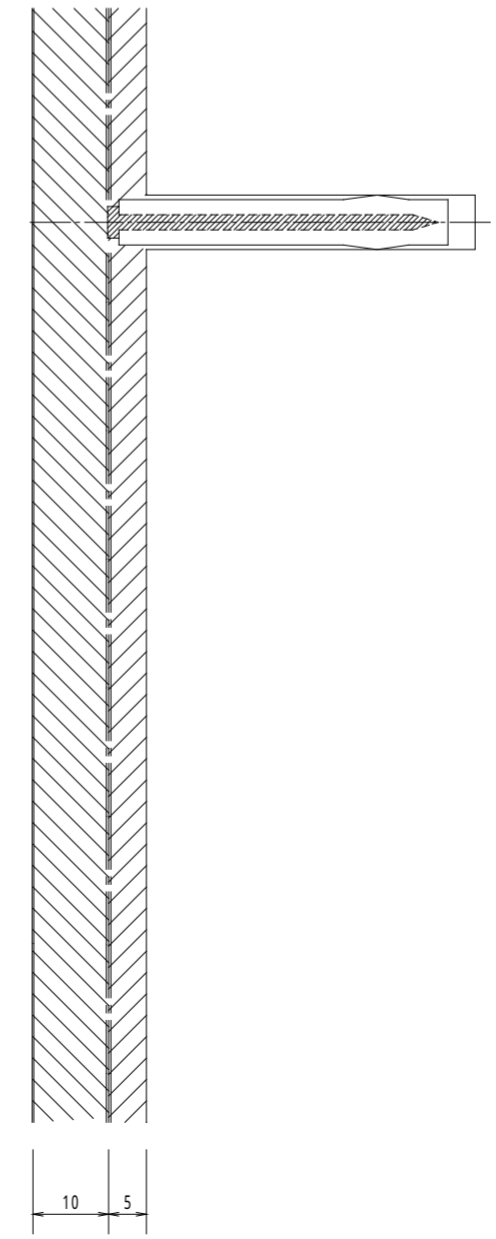
⑦

モルタル吹付け
アンカピン打込み



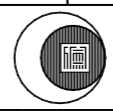
⑧

防水塗装



TITLE 日本道路公団沖縄自動車道屋嘉第一高架橋改修
A P 1 電気防食工事
施工詳細図 - 炭素繊維網取付

DRAWN	<i>K. Sakai</i>	DATE	H6. 5.25	SCALE	1/ 1
CHECKED		DWG No.	EB - 005		
APPROVED					



MEIRIN CO, LTD.